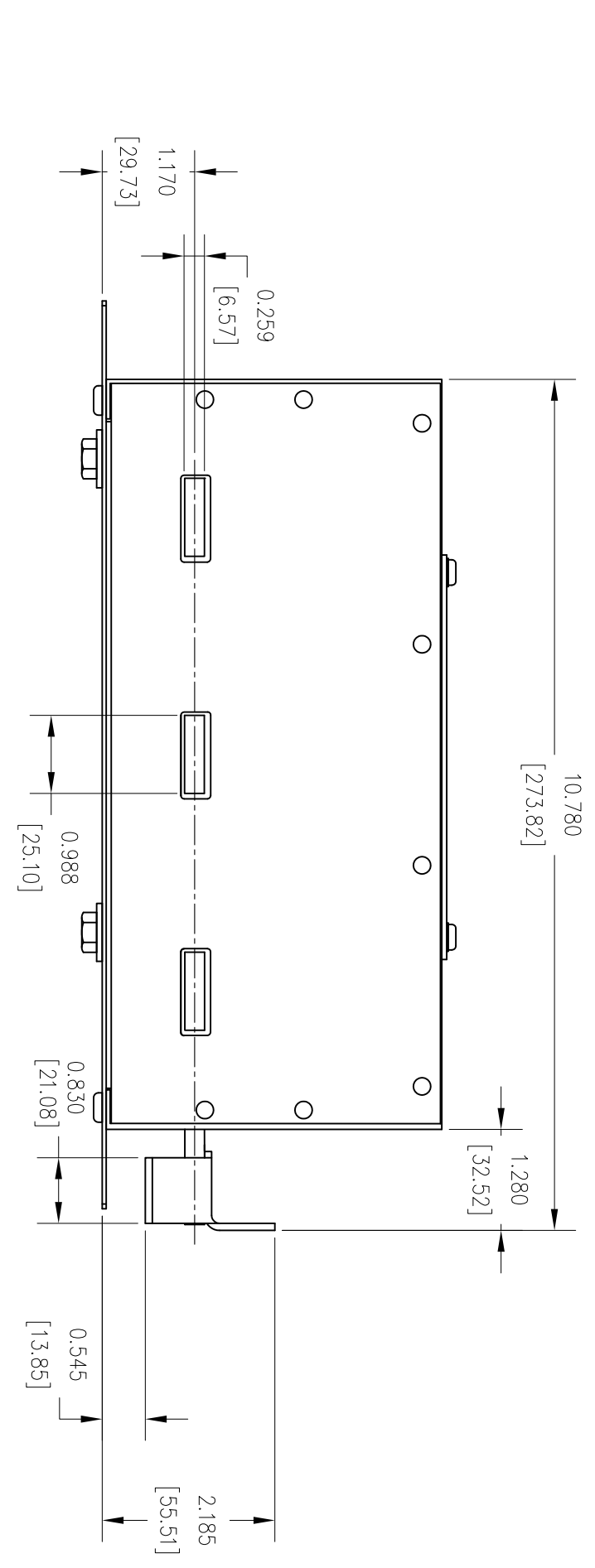
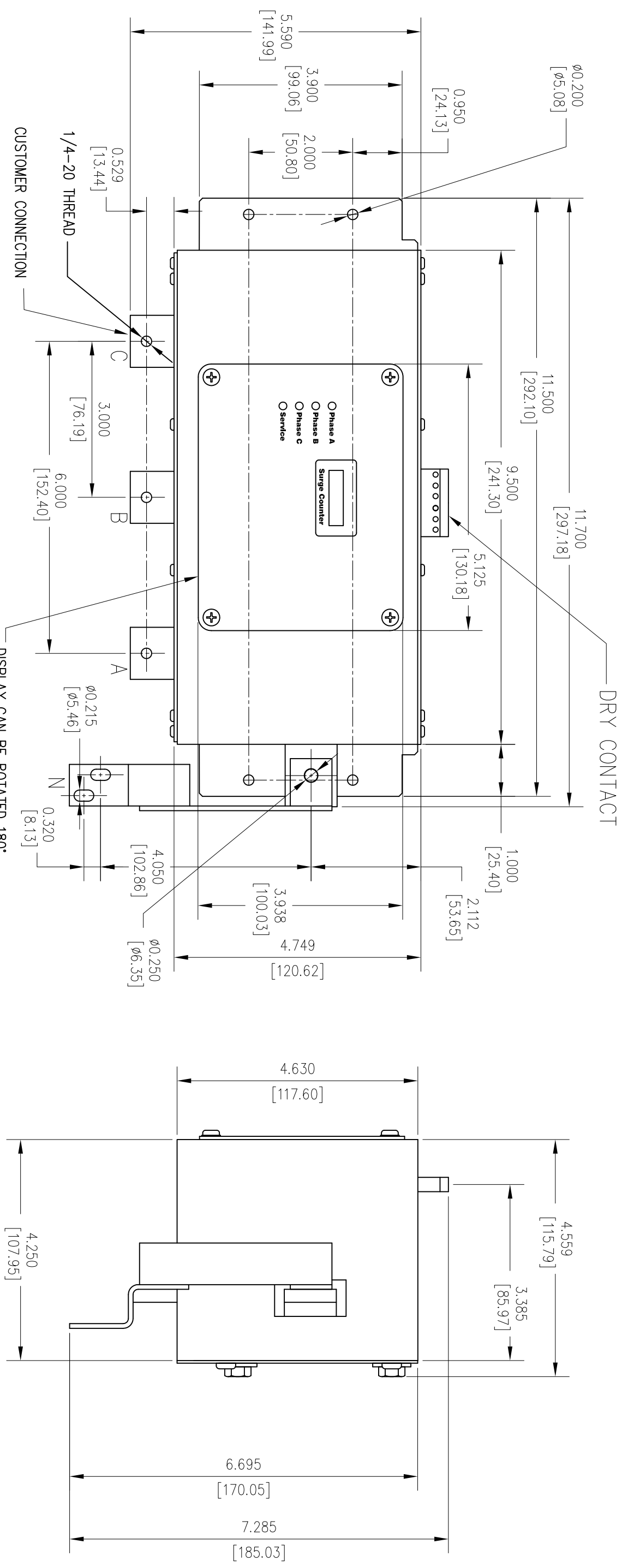


SURGE PROTECTIVE DEVICE (SPD) WEIGHTS & DIMENSIONS



SPECS.
 DESC: TPS3-01 SERIES SPD MODULE
 KA RATING: 100-300
 In RATTING: 20KA
 OVERALL DIM: 11.7"L x 7.2"W x4.5"D
 MAT: ALUMINUM, 16 GAUGE
 FINISH: BLACK ANNOIDIZED
 NEMA RATING: 1
 DEVICE WEIGHT: 4.55 LBS. (2.06 KG.)

Rev	C.N.	Date			
<p>△ - Denotes latest changes.</p> <p>□ - Critical dimension.</p> <p>Unless otherwise specified dimensions are in inches. Tolerances are non-unumitive and are as follows unless specified otherwise. XX ±.020 Angler ±.2 Do not scale drawing</p>					
DRAWN: H. DRIGGERS ENGINEER: MAJG APPROVAL: 9/17/09			9/17/09 TPSS-01 SERIES 100-300K SPD MODULE		
DWG NO. 43D-TPS3-01-M SCALE NONE			SHEET 1 of 1		

**Confidential - Property of
 Siemens Industry, Inc.**
 Building Technologies Division