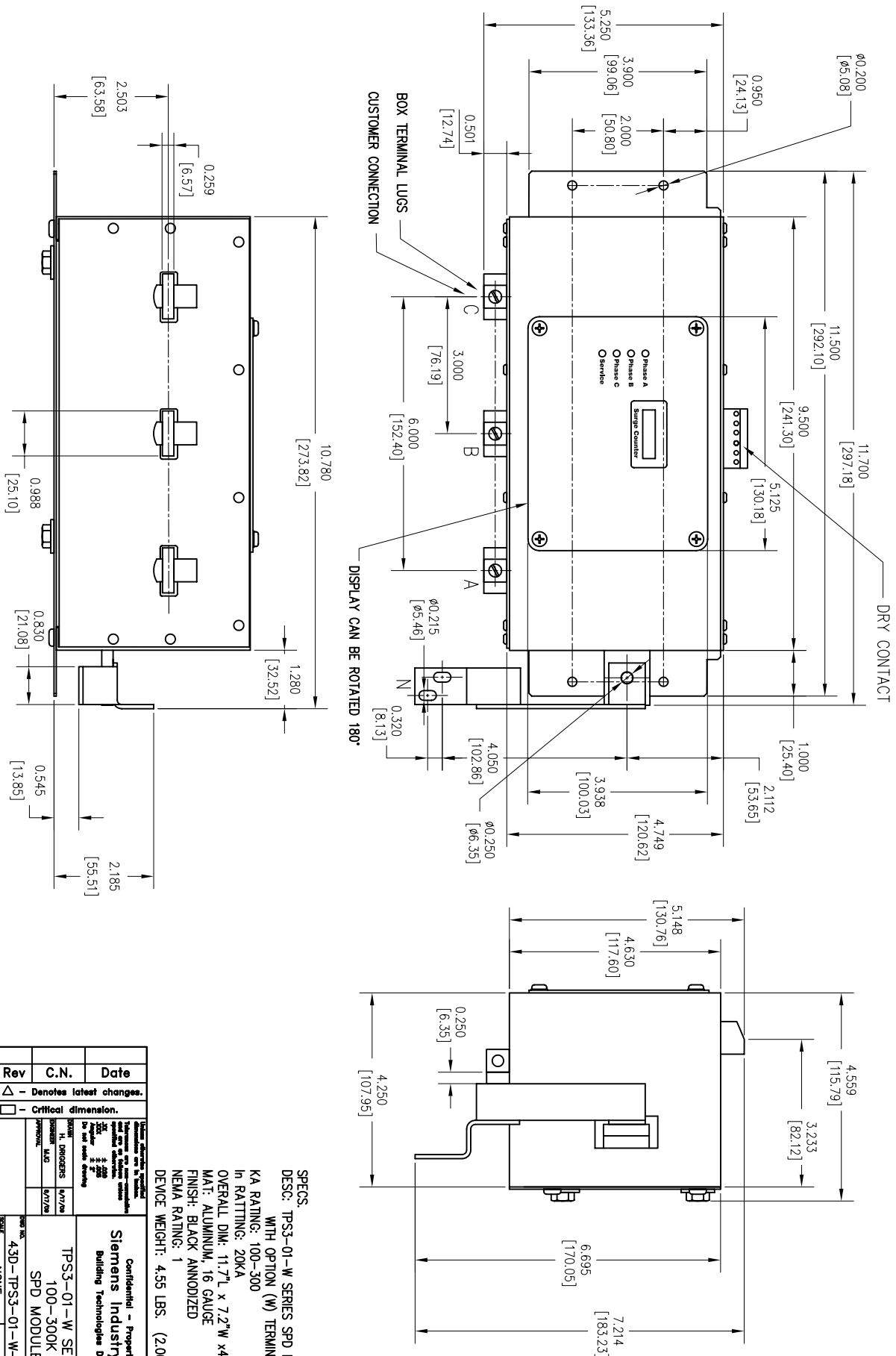


# SURGE PROTECTIVE DEVICE (SPD) WEIGHTS & DIMENSIONS



**SPECS:**  
 DESC: TPS3-01-W SERIES SPD MODULE WITH OPTION (W) TERMINAL LUG  
 KA RATING: 100-300  
 In RATING: 20KA  
 OVERALL DIM: 11.7" L x 7.2" W x 4.5" D  
 MAT: ALUMINUM, 16 GAUGE  
 FINISH: BLACK ANODIZED  
 NEMA RATING: 1  
 DEVICE WEIGHT: 4.55 LBS. (2.06 KG.)

Rev	C.N.	Date
1		

Denotes latest changes.  
 Critical dimension.

DESIGNED BY	H. DRINGERS	DATE	6/17/26
DRAWN BY		DATE	
CHECKED BY		DATE	
APPROVED BY		DATE	

Confidential - Property of Siemens Industry, Inc. Building Technologies Division  
 TPS3-01-W SERIES 100-300K SPD MODULE  
 43D-TPS3-01-W-M  
 NONE  
 SHEET 1 OF 1