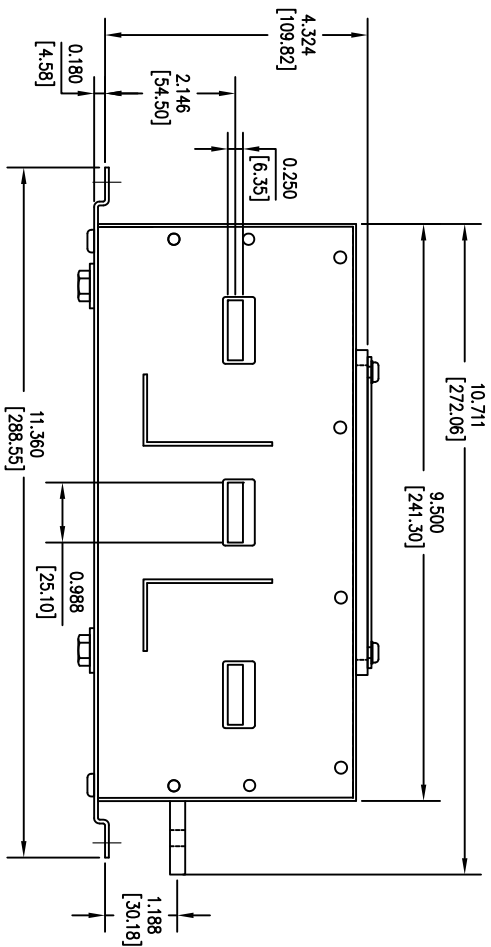
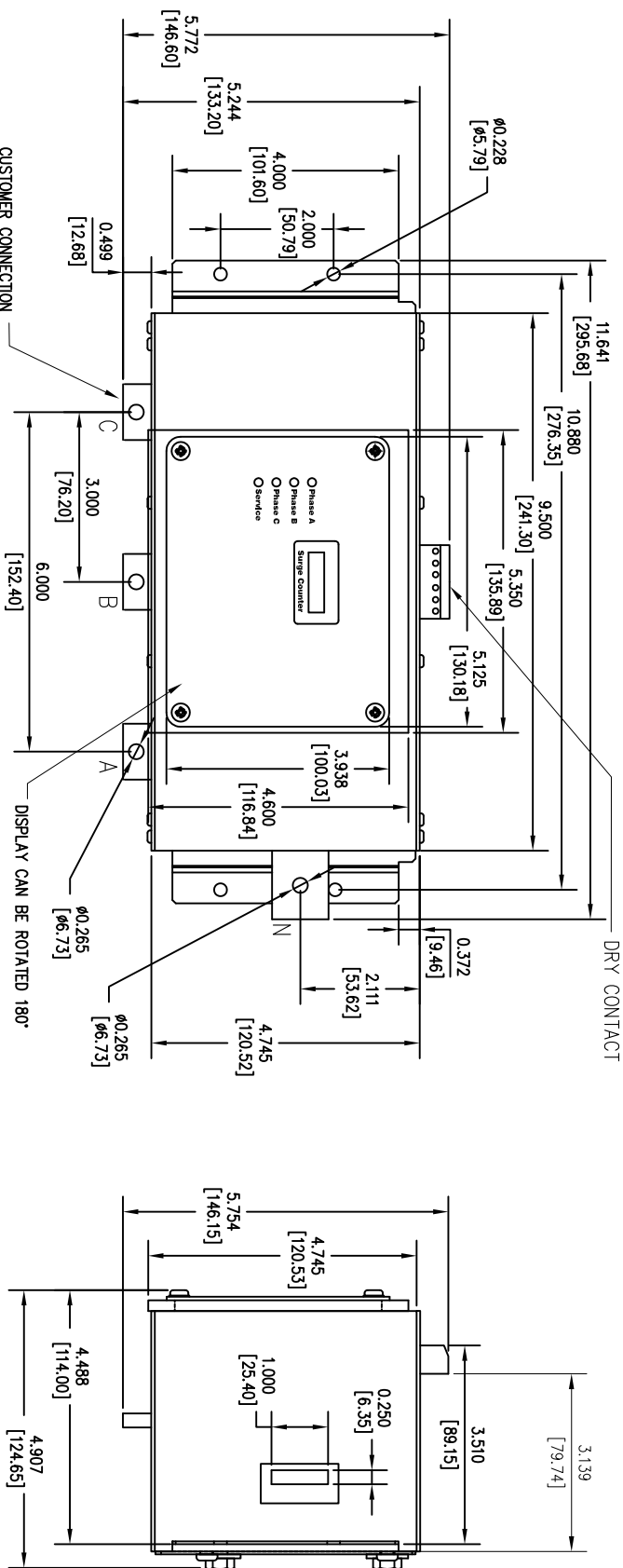


SURGE PROTECTIVE DEVICE (SPD) WEIGHTS & DIMENSIONS



SPECS:
 DESC: TPS3-02 SERIES SPD MODULE
 KA RATING: 100-300
 In RATTING: 20KA
 OVERALL DIM: 11.6" L x 5.7" W x 4.9" D
 MAT: ALUMINUM, 16 GAUGE
 FINISH: BLACK ANNOXIDIZED
 NEMA RATING: 1
 DEVICE WEIGHT: 4.55 LBS. (2.06 KG.)

| Rev | C.N. | Date |
|--|------|---------|
| △ - Denotes latest changes. □ - Critical dimension. | | |
| 1 | | 6/29/14 |
| 2 | | 6/29/14 |
| 3 | | 6/29/14 |
| 4 | | 6/29/14 |
| 5 | | 6/29/14 |
| 6 | | 6/29/14 |
| 7 | | 6/29/14 |
| 8 | | 6/29/14 |
| 9 | | 6/29/14 |
| 10 | | 6/29/14 |
| 11 | | 6/29/14 |
| 12 | | 6/29/14 |
| 13 | | 6/29/14 |
| 14 | | 6/29/14 |
| 15 | | 6/29/14 |
| 16 | | 6/29/14 |
| 17 | | 6/29/14 |
| 18 | | 6/29/14 |
| 19 | | 6/29/14 |
| 20 | | 6/29/14 |
| 21 | | 6/29/14 |
| 22 | | 6/29/14 |
| 23 | | 6/29/14 |
| 24 | | 6/29/14 |
| 25 | | 6/29/14 |
| 26 | | 6/29/14 |
| 27 | | 6/29/14 |
| 28 | | 6/29/14 |
| 29 | | 6/29/14 |
| 30 | | 6/29/14 |
| 31 | | 6/29/14 |
| 32 | | 6/29/14 |
| 33 | | 6/29/14 |
| 34 | | 6/29/14 |
| 35 | | 6/29/14 |
| 36 | | 6/29/14 |
| 37 | | 6/29/14 |
| 38 | | 6/29/14 |
| 39 | | 6/29/14 |
| 40 | | 6/29/14 |
| 41 | | 6/29/14 |
| 42 | | 6/29/14 |
| 43 | | 6/29/14 |
| 44 | | 6/29/14 |
| 45 | | 6/29/14 |
| 46 | | 6/29/14 |
| 47 | | 6/29/14 |
| 48 | | 6/29/14 |
| 49 | | 6/29/14 |
| 50 | | 6/29/14 |
| 51 | | 6/29/14 |
| 52 | | 6/29/14 |
| 53 | | 6/29/14 |
| 54 | | 6/29/14 |
| 55 | | 6/29/14 |
| 56 | | 6/29/14 |
| 57 | | 6/29/14 |
| 58 | | 6/29/14 |
| 59 | | 6/29/14 |
| 60 | | 6/29/14 |
| 61 | | 6/29/14 |
| 62 | | 6/29/14 |
| 63 | | 6/29/14 |
| 64 | | 6/29/14 |
| 65 | | 6/29/14 |
| 66 | | 6/29/14 |
| 67 | | 6/29/14 |
| 68 | | 6/29/14 |
| 69 | | 6/29/14 |
| 70 | | 6/29/14 |
| 71 | | 6/29/14 |
| 72 | | 6/29/14 |
| 73 | | 6/29/14 |
| 74 | | 6/29/14 |
| 75 | | 6/29/14 |
| 76 | | 6/29/14 |
| 77 | | 6/29/14 |
| 78 | | 6/29/14 |
| 79 | | 6/29/14 |
| 80 | | 6/29/14 |
| 81 | | 6/29/14 |
| 82 | | 6/29/14 |
| 83 | | 6/29/14 |
| 84 | | 6/29/14 |
| 85 | | 6/29/14 |
| 86 | | 6/29/14 |
| 87 | | 6/29/14 |
| 88 | | 6/29/14 |
| 89 | | 6/29/14 |
| 90 | | 6/29/14 |
| 91 | | 6/29/14 |
| 92 | | 6/29/14 |
| 93 | | 6/29/14 |
| 94 | | 6/29/14 |
| 95 | | 6/29/14 |
| 96 | | 6/29/14 |
| 97 | | 6/29/14 |
| 98 | | 6/29/14 |
| 99 | | 6/29/14 |
| 100 | | 6/29/14 |

Confidential - Property of
Siemens Industry, Inc.
 Building Technologies Division
 TPS3-02 SERIES
 100-300K
 SPD MODULE
 DWP 6/29/14
 APPROVAL MJC 6/29/14
 SCALE NONE
 SHEET 1 of 1