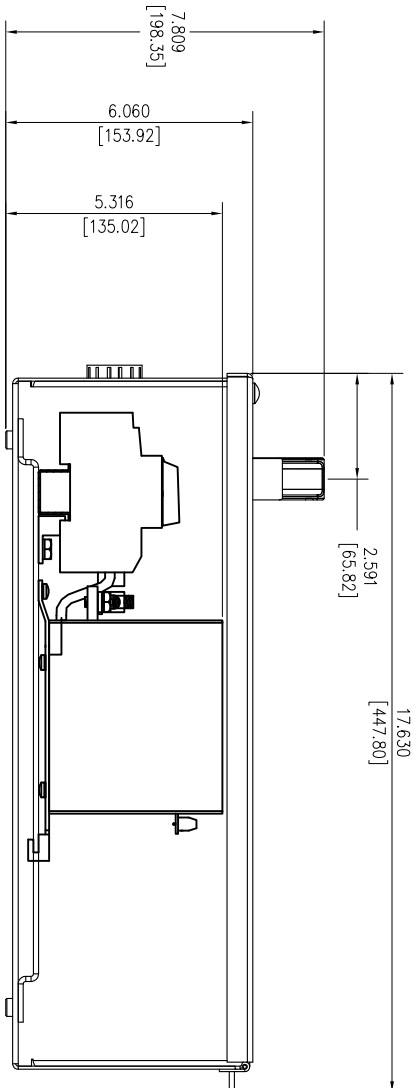
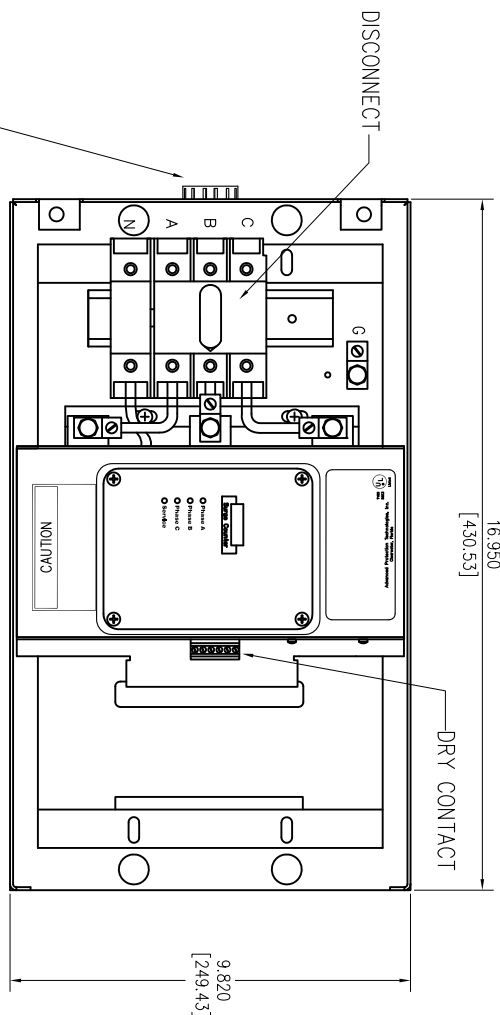
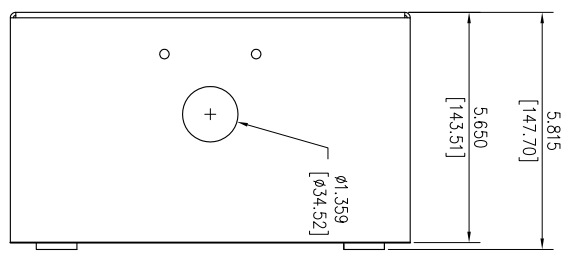


SURGE PROTECTIVE DEVICE (SPD)
WEIGHTS & DIMENSIONS
NEMA RATING: 1



ENCLOSURE SPECS:
DESC: U10E10 ENCLOSURE, HINGED
DIM: 10"H x 17"W x 6"D
MAT: GALVANNEAL, 16 GAUGE
FINISH: POWDERCOAT ANSI 61 GRAY
NEMA RATING: 1
DEVICE WEIGHT: 9.4 LBS. (4.2KG.)

Rev	C.N.	Date
△	-	Denotes latest changes.
□	-	Critical dimension.

DESIGNED BY H. DRIGGERS	DATE 6/17/26	Confidential - Property of Siemens Industry, Inc. Building Technologies Division
DRAWN BY MAG	DATE 6/17/26	
TPS3-05 SERIES 100K-300K IN U10E10 ENCLOSURE		Dwg No. 43D-TPS3-05-M SCALE NONE SHEET 1 of 1