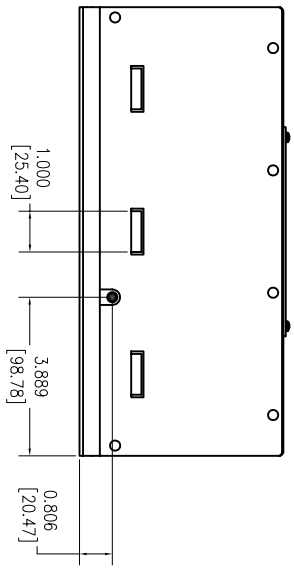
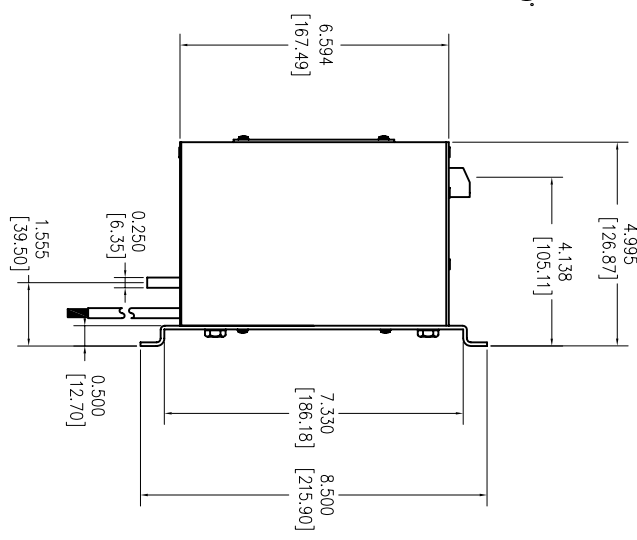
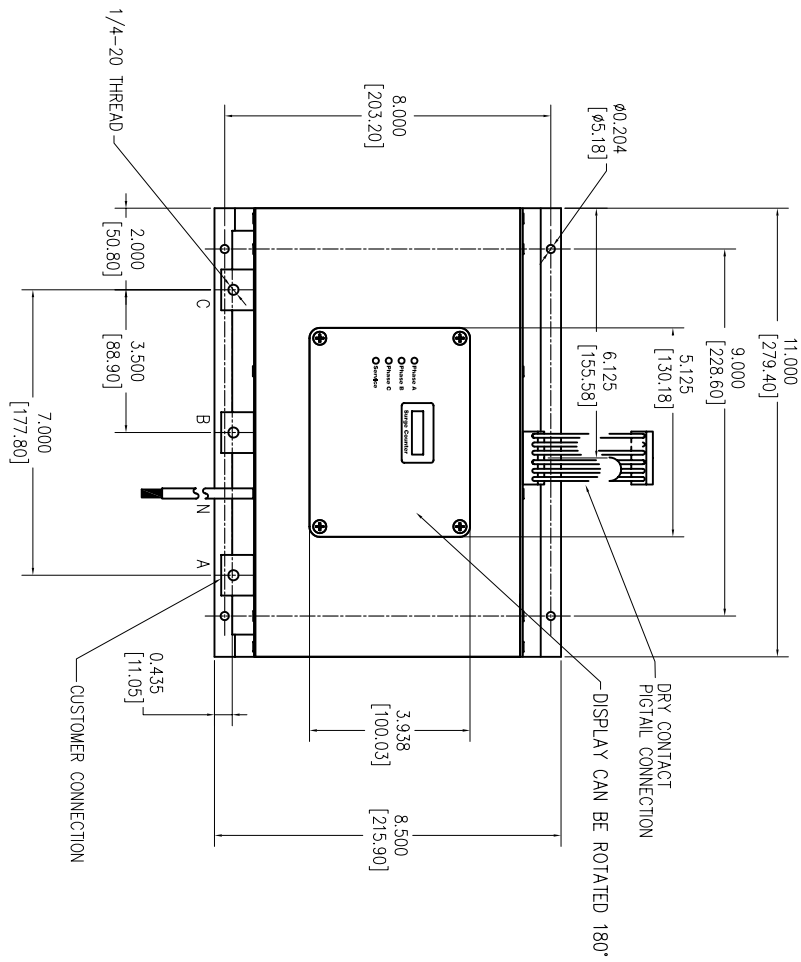


SURGE PROTECTIVE DEVICE (SPD) WEIGHTS & DIMENSIONS



SPECS:  
 DESC: TPS3-06-BUS SERIES SPD MODULE  
 WITH OPTION (B) BUSWAY  
 KA RATING: 400-500  
 In RATING: 20KA  
 OVERALL DIM: 11" L x 8.5"W x 5"D  
 ENCL. MAT: ALUMINUM, 16 GAUGE  
 FINISH: BLACK ANODIZED  
 NEMA RATING: 1  
 DEVICE WEIGHT: 6.55 LBS. (2.97 KG.)

Rev	C.N.	Date
1		

Denotes latest changes.  
 Critical dimension.

DESIGNED BY	H. DRINGERS	DATE	6/1/78
DRAWN BY	M.D.	DATE	6/1/78
CHECKED BY		DATE	
APPROVED BY		DATE	

TPS3-06-BUS SERIES 400-500K SPD MODULE	Siemens Industry, Inc. Building Technologies Division
--	--

43D-TPS3-06-500-BUS-M	REVISED
NONE	SHEET 1 OF 1