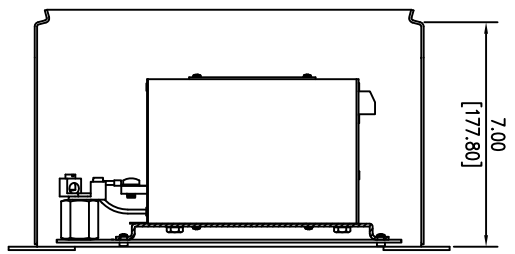
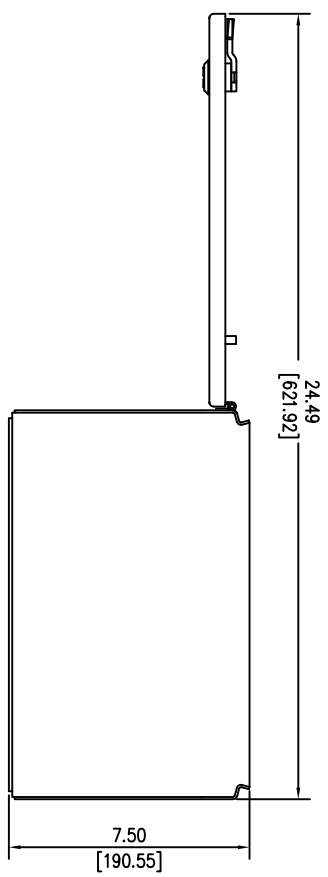
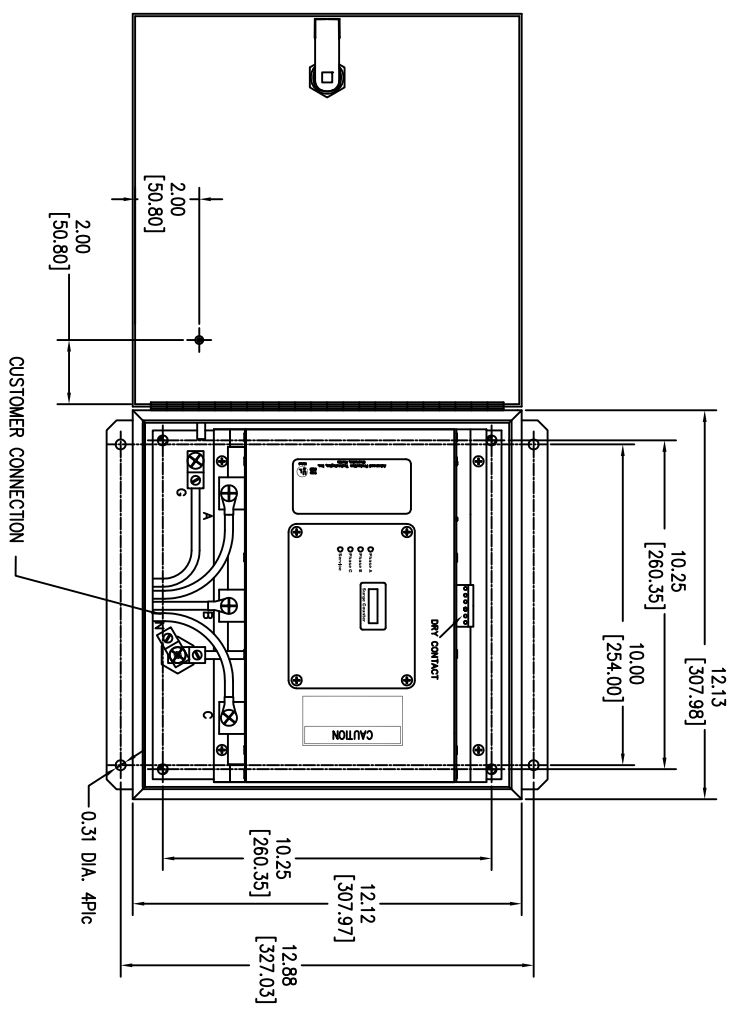


SURGE PROTECTIVE DEVICE (SPD)
WEIGHTS & DIMENSIONS
NEMA RATING: 4X STAINLESS STEEL



ENCLOSURE SPECS.
DESC: ENCLOSURE, HINGED
DIM: 12"H x 12"W x 7"D
MAT: STAINLESS STEEL, 14 GAUGE
FINISH: STAINLESS STEEL
NEMA RATING: 4X
DEVICE WEIGHT: 24.20LBS. (10.97KG.)

| Rev | C.N. | Date |
|-----|------|-------------------------|
| △ | - | Denotes latest changes. |
| □ | - | Critical dimension. |

| | | |
|---|-----------------|---|
| DESIGNED BY H. DRIGGERS | DATE 6/17/26 | Confidential - Property of Siemens Industry, Inc. Building Technologies Division |
| DRAWN BY MAG | DATE 6/17/26 | |
| CHECKED BY MAG | DATE 6/17/26 | |
| TPS3-12 SERIES 400k-500k w/o DS NEMA RATING: 4X | | |
| DWG NO. 43D-TPS3-12500-4XM SIZE NONE | | SHEET 1 OF 1 |